



DILLON MCCRAY THOMAS

PORTFOLIO
UPDATED APRIL 2026

This portfolio introduces my undergraduate work in theater design & technology alongside an exploration of architectural studies, reflecting my belief that creativity should not only shape experiences but also contribute to a better world. Rooted in theatrical design and evolving into architectural lighting, my work is driven by a commitment to sustainability and an interest in how design operates within environmental systems. Looking ahead, I aim to design spaces where environmental responsibility and human well-being work together.

DILLON MCCRAY THOMAS

RESUME

EDUCATION

Texas Christian University — Fort Worth, TX
Bachelor of Fine Arts, Theatre (Design & Technology) 8.2022 - 5.2026

PROFESSIONAL EXPERIENCE

ARUP 6.2025 - 12.2025
Lighting Consulting Intern | Texas South Lighting Team (Renewed 06/26)

TCU Housing & Residence Life 8.2025 - Present
Lead Resident Assistant

LIGHTING DESIGN PRODUCTIONS (TCU)

The Wolves Spring 2023

Bard To Broadway Fall 2023

The Choreographers Stage Fall 2023

Blackout Volume 3-6 (Student Cabaret Performance) Fall 2022 - 2025

The Effects of Gamma Rays on Man-in-the-Moon Marigolds Fall 2024

Pacific - Mark Morris Spring 2026

The Roses That Wilt (Senior Dance Capstone) Spring 2026

NON-DESIGN LEADERSHIP & SERVICE (TCU)

TCU Student Government Association
Marketing & Communication Chair 4.2024 - 5.2025

TCU New Student and Family Programs
Orientation Coordinator 9.2023 - 1.2025

TCU Office of Loyalty Giving
Digital Philanthropy Social Media Student Worker 9.2024 - 5.2025

SKILLS

BIM / CAD

Revit | AutoCAD | Vectorworks | SketchUp

Lighting Analysis & Visualization

DIALux Evo | AGi32 | Capture Visualization (Visualisation)

Rendering & Real-Time Visualization

Enscape | Twinmotion | Blender | Augment3D

Adobe Creative Suite

Photoshop | Indesign | Adobe Premiere Pro | Acrobat | Lightroom

Digital Illustration

Procreate

Productivity

Microsoft Office Suite

CONTENTS

01 ARUP + MIAMI BEACH	PG 05
02 GAMMA RAYS	PG 10
03 BIOPHILIC COURTYARD	PG 15
04 TEMPLE BETH-EL	PG 17
05 COSTUME DESIGN	PG 19
06 PHOTOGRAPHY	PG 20



01

ROLES + SCOPE

Role: Lighting Consulting Intern

Date: Summer – Fall 2025

As a lighting consulting intern with the Texas South Lighting team at Arup, I supported the design development and technical coordination of commercial lighting projects. Responsibilities included lighting calculations in DIALux evo, fixture research and layout, drafting lighting plans in Revit and AutoCAD, precedent analysis, and the preparation of internal and client-facing presentation materials using the Adobe Creative Suite.

ARUP

01

MIAMI BEACH

Project Type: Commercial - Lighting Design

Location: Miami Beach, FL

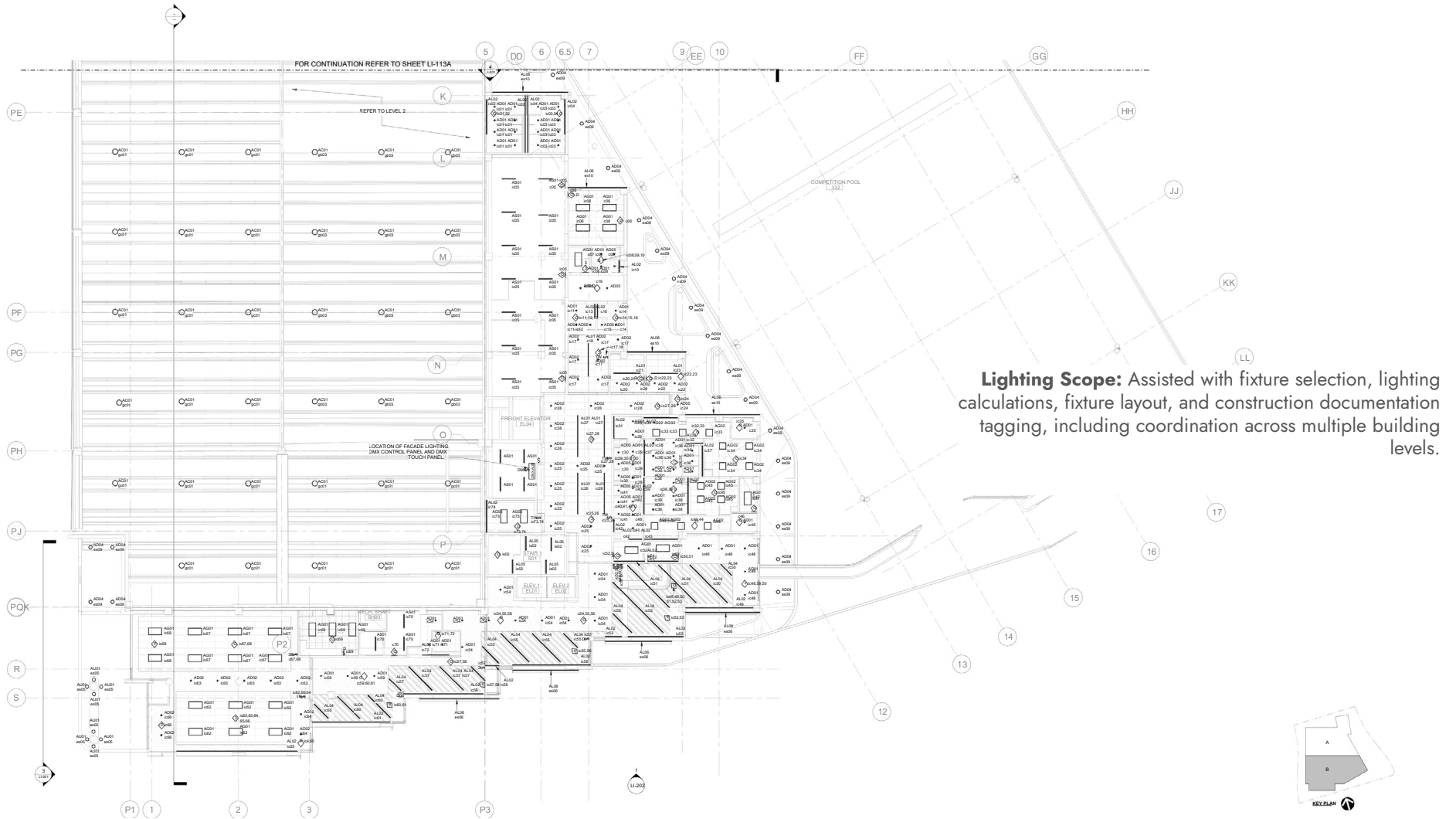
Date: Summer 2025

Software: DIALux Evo, Revit

The lighting design for the 72nd Street Miami Beach Community Center emphasizes safety, comfort, and environmental responsibility within a welcoming civic setting. A layered approach using downlights, linear fixtures, and grazers supports diverse interior functions, including reading, recreation, fitness, and gathering areas. Exterior lighting strategies address night-sky protection and Florida's turtle-friendly requirements through warm 3000K and amber sources, shielding, and controlled glare. Together, these strategies enhance visual clarity and user comfort while aligning with Miami Beach's sustainability goals

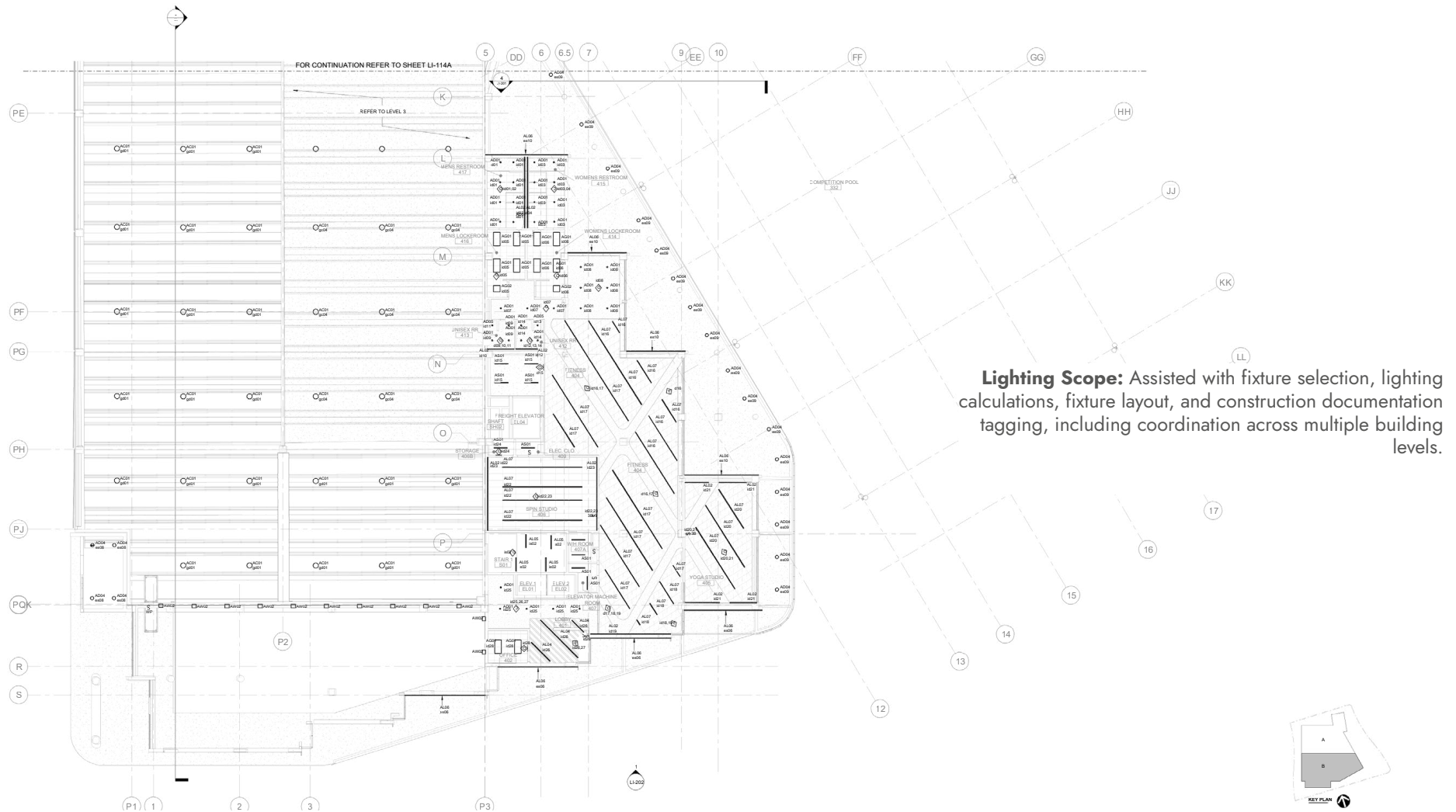


72ND STREET MIAMI BEACH COMMUNITY CENTER



Lighting Scope: Assisted with fixture selection, lighting calculations, fixture layout, and construction documentation tagging, including coordination across multiple building levels.

72ND STREET MIAMI BEACH COMMUNITY CENTER

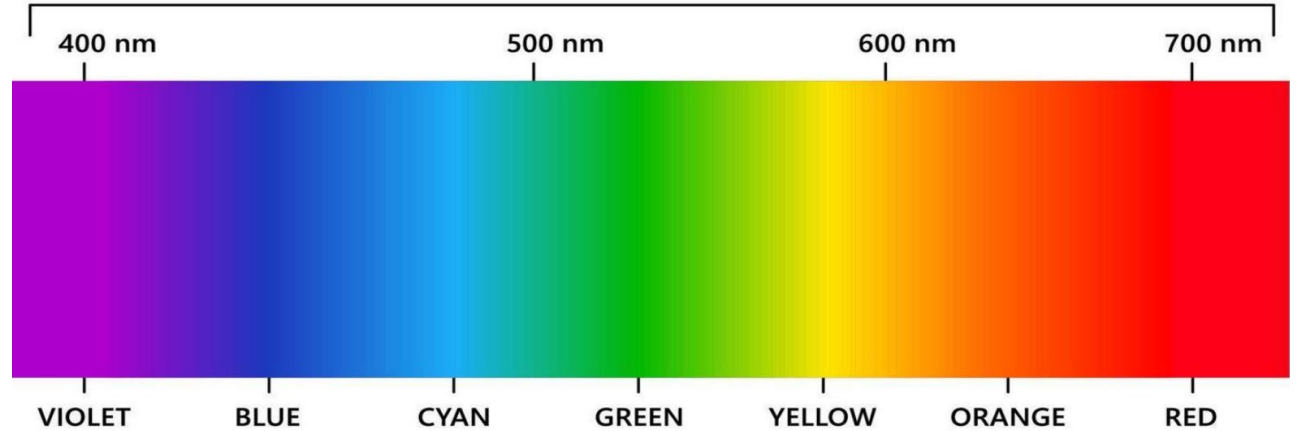


ENVIRONMENTAL ANALYSIS

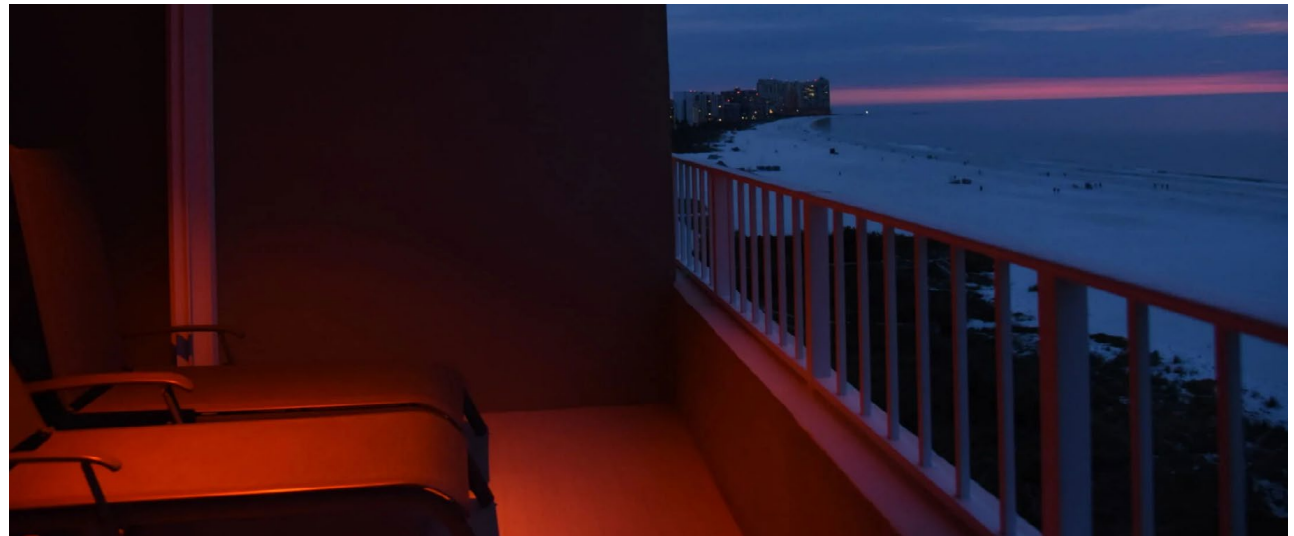
Artificial lighting in coastal environments can significantly disrupt ecological systems. In Miami Beach, sea turtle hatchlings rely on natural light, such as moonlight reflecting off the ocean, to navigate. However, artificial lighting from urban environments often becomes the dominant light source, leading to disorientation and increased mortality.

This study explores how lighting strategies, including spectral composition, intensity, and shielding, can reduce ecological disruption while maintaining human visibility and safety.

These ideas inform my approach to environmental lighting, particularly in coastal and public environments.



Short-wavelength light (blue/green) is highly visible to sea turtles, while long-wavelength amber light falls outside their primary sensitivity range.



Turtle-friendly amber lighting used in coastal environments to reduce ecological disruption while maintaining visibility.

MIAMI BEACH

02

GAMMA RAYS

Project Type: Lighting Design—Theatre Production

Location: Texas Christian University, Fort Worth, TX

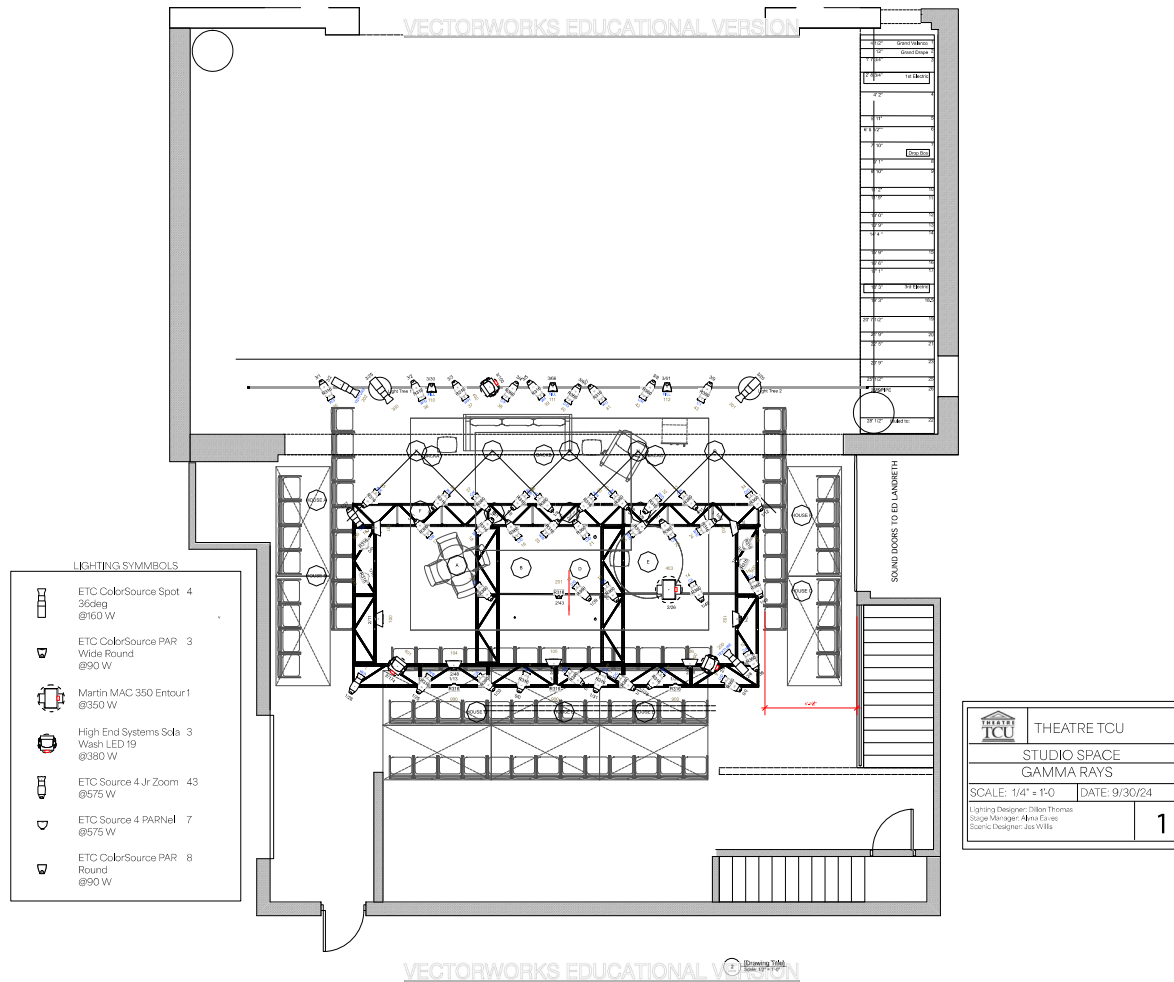
Date: Fall 2024

Software: Augment 3d, Capture Visualisation, Vectorworks

The Effects of Gamma Rays on Man-in-the-Moon Marigolds by Paul Zindel explores growth and resilience within hostile conditions, where irradiated marigold seeds symbolize beauty and transformation emerging from adversity. The lighting design responds to a decaying domestic environment by using contrast, isolation, and shadow to reflect emotional instability, confinement, and moments of fragile hope. Shifts in intensity and focus allow light to adapt alongside the characters, reinforcing themes of endurance and transformation in the face of adversity.



LIGHTING PLOT



The lighting plot translates the conceptual drivers of contrast, isolation, and shadow into a cohesive technical system. Light and shadow are organized to emphasize the tension between hope and despair, growth and decay, and moments of stability versus collapse. Focused lighting and selective visibility reinforce emotional and physical isolation, heightening confinement and vulnerability, while shadow play adds depth and unease, suggesting hidden fear, suppressed emotions, and the instability of the domestic environment.

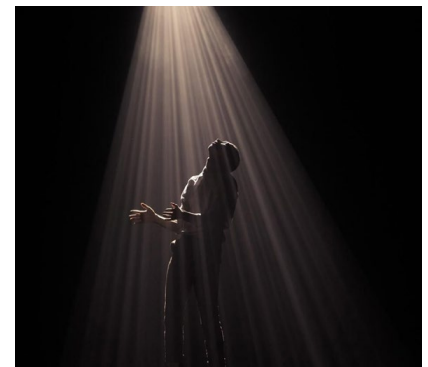
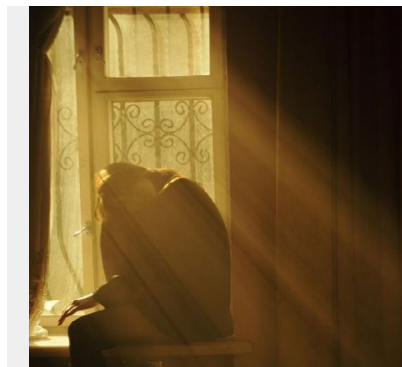
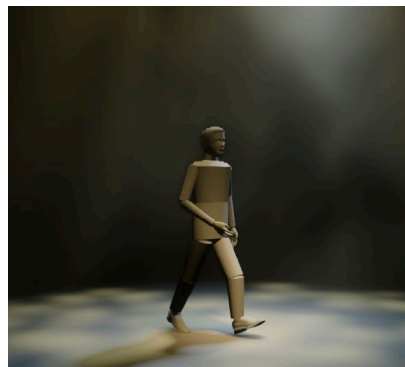
GAMMA RAYS

PRELIMINARY LIGHTING RENDERINGS

Quick lighting concept renderings were developed using Capture Visualization to test intensity, color, focus, and contrast early in the design process.

These studies allowed rapid exploration of mood, isolation, and shadow before finalizing the lighting plot, ensuring that conceptual drivers translated clearly into spatial and emotional lighting choices on stage.

Alongside these renderings, precedent research in design was explored to inform spatial composition, material interaction, and atmospheric qualities, allowing conceptual inspiration to guide lighting decisions beyond technical execution.



GAMMA RAYS

02

COLOR PALETTES



Blue tones introduce emotional distance and detachment while also suggesting moments of intellect, clarity, and calm as characters navigate trials and adversity.



Earth tones are used to convey dullness, decay, and the weight of the mundane environment, reinforcing the emotional stagnation of the domestic setting.

GAMMA RAYS

02

PRODUCTION PHOTOS



GAMMA RAYS

02

03

GREEN CORE

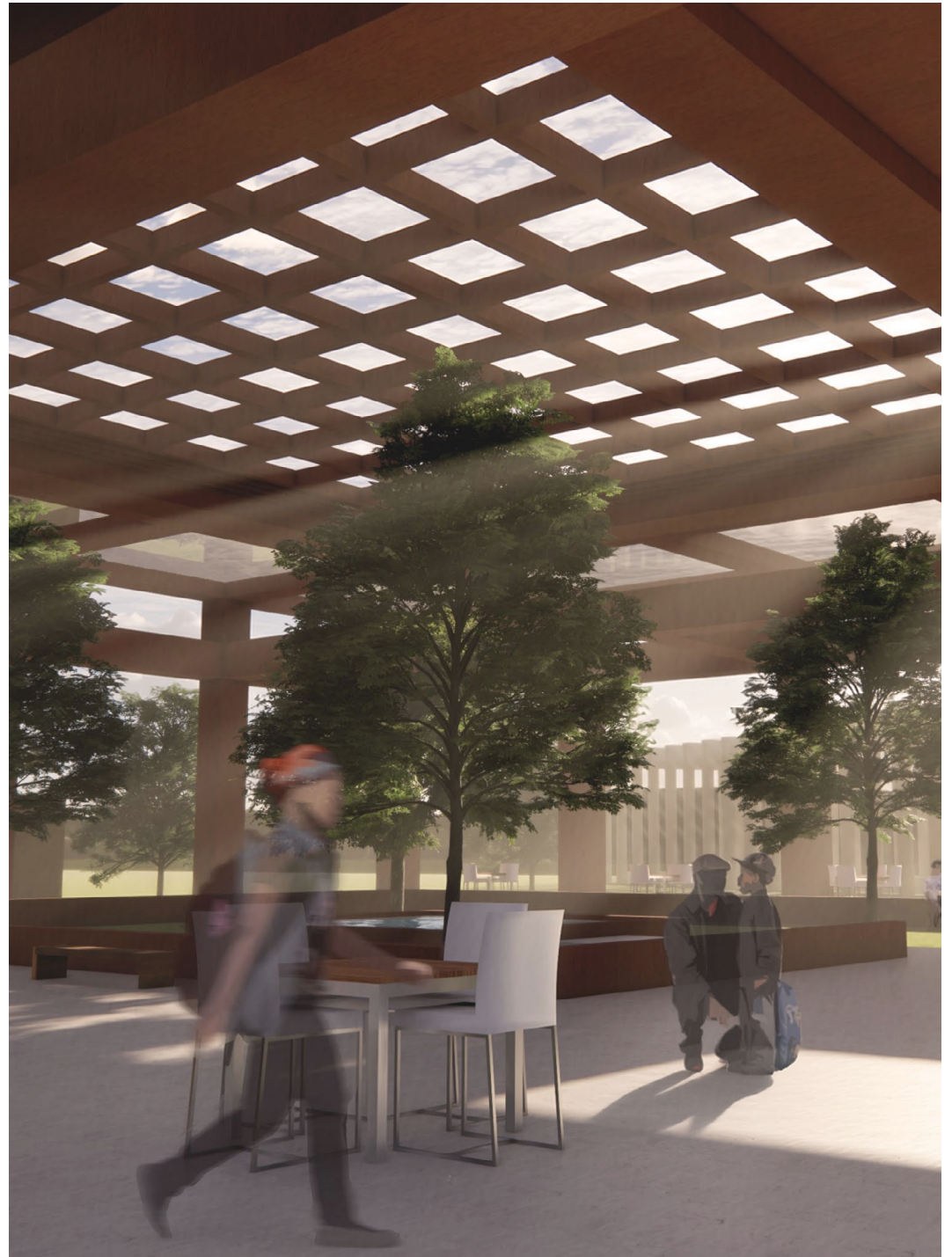
Project Type: Conceptual Courtyard / Public Space

Location: Fort Worth, TX

Date: Fall 2025

Software: SketchUp, Enscape, Twinmotion

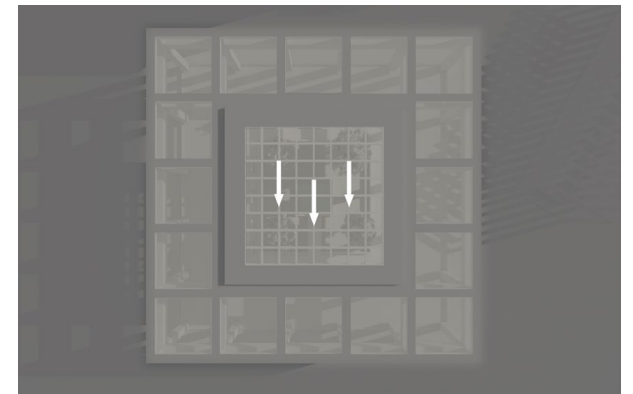
This biophilic courtyard explores timber and cork as renewable, low-carbon materials that create a warm and natural environment. The design prioritizes daylight, openness, and passive strategies to strengthen the relationship between people, landscape, and climate.



BIOPHILIC COURTYARD

The courtyard functions as a shared social space shaped by light, structure, and landscape. Trees, water, and shaded seating create a microclimate that supports thermal comfort, movement, and informal gathering throughout the day.

A gridded roof system introduces filtered daylight into the courtyard, allowing light to penetrate deep into the space while reducing glare and heat gain. The repeated apertures distribute soft, diffuse light, contributing to both visual comfort and environmental performance within the space.



GREEN CORE

03

04

TEMPLE BETH-EL

Project Type: Conceptual Architectural Lighting Study

Location: San Antonio, TX

Date: Fall 2025

Software: Procreate, Photoshop, Rhino 3D

This project proposes a conceptual architectural lighting strategy for the Wulfe Sanctuary at Temple Beth-El in San Antonio, exploring how light can support ritual, procession, and collective gathering within a sacred interior. The design responds to the evolving nature of worship through adaptability, inclusivity, and atmospheric restraint while maintaining reverence for the existing architectural form.

Light is treated as a spatial and experiential element rather than a fixed condition. A hierarchy of ambient, focal, and accent lighting establishes moments of pause, orientation, and emphasis, balancing clarity and warmth while reinforcing the emotional character of the space.

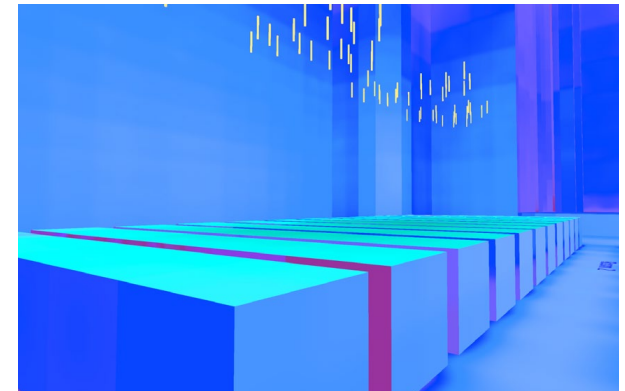
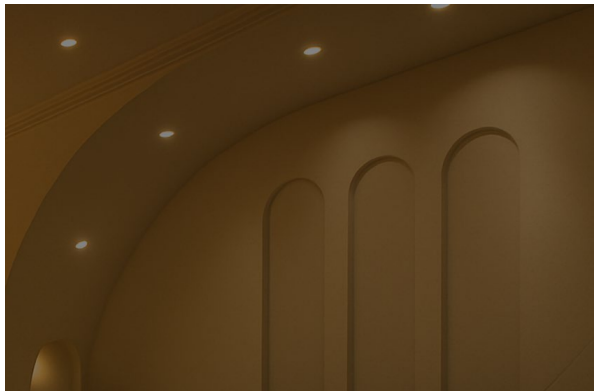
This work was developed as an independent conceptual study during my lighting consulting internship with Arup, exploring a potential renovation approach for the Wulfe Sanctuary at Temple Beth-El.



WULFE SANCTUARY

The lighting system employs a layered approach combining ambient downlighting, vertical illumination, and focused accent lighting to articulate architectural rhythm and spatial hierarchy. Warm, tunable white luminaires allow the sanctuary to transition between contemplative and communal modes, supporting a range of worship practices and gathering scales.

Quantitative lighting studies were conducted to verify visual comfort and appropriate illumination levels while preserving the intended atmospheric quality of the space. Control strategies prioritize flexibility, longevity, and ease of use, ensuring the lighting system can adapt to future needs without compromising architectural intent.



TEMPLE BETH-EL

05

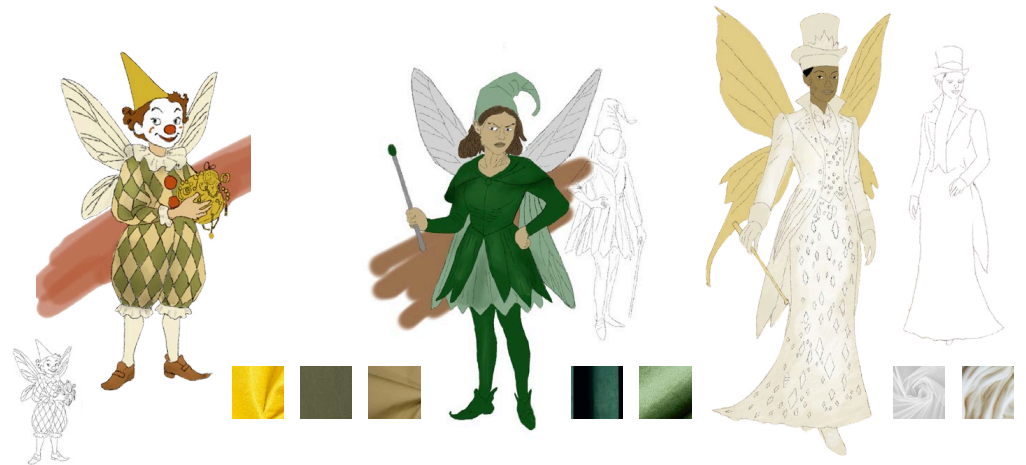
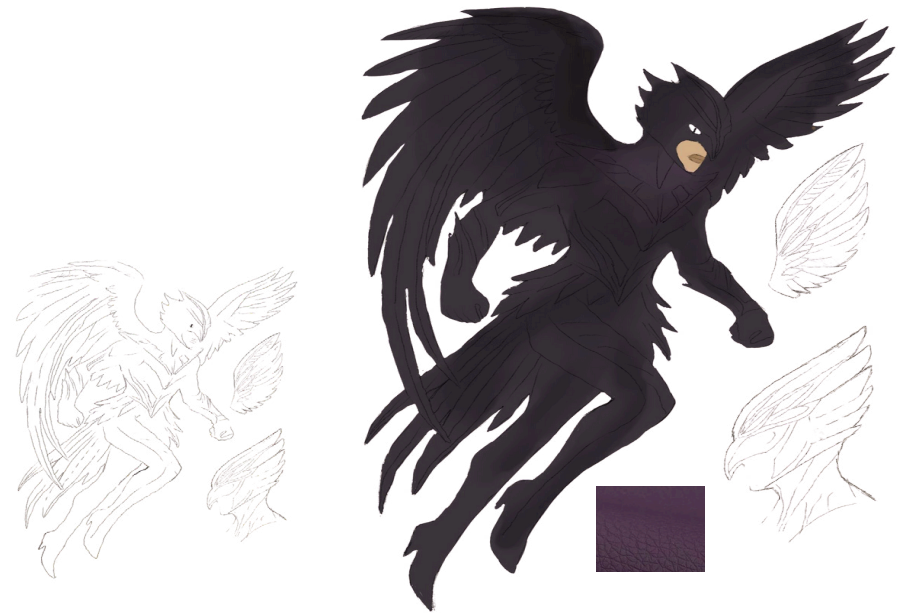
COSTUME DESIGN

Project Type: Conceptual - Costume Design Course

Location: Texas Christian University, Fort Worth, TX

Date: Spring 2025

The Dark Circus is a fractured spectacle operated by exiled fairies forced to perform in the human world. Each character embodies one of the seven deadly sins, distorted through fairy lore and circus performance. Rather than literal representations, the sins emerge through unsettling behaviors and exaggerated roles, creating a world that feels unstable, deceptive, and morally fractured.



06

PHOTOGRAPHY

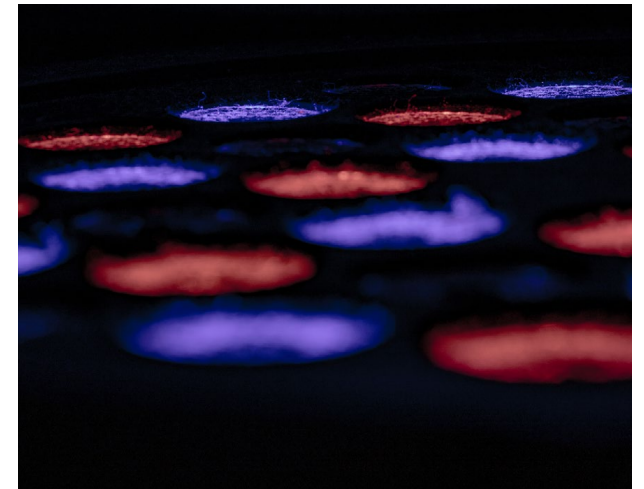
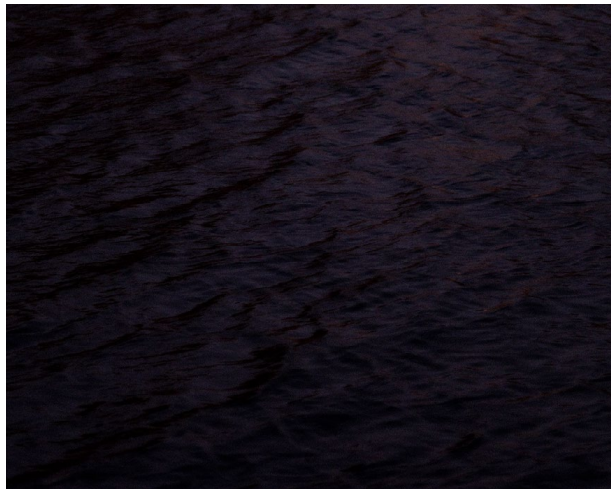
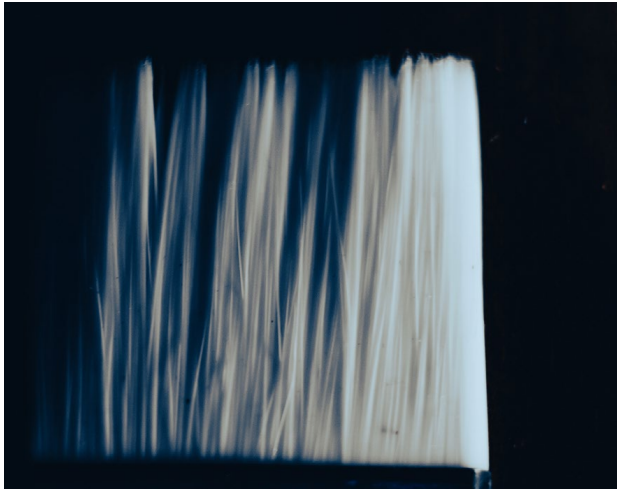
Date: 2024 - 2025

Experience: Photographer for Paradox Church

This photography series explores light, atmosphere, and composition, focusing on the relationship between light, space, and material. The work reflects an interest in spatial perception and the experiential qualities of the built environment.



LIGHT STUDIES



PHOTOGRAPHY

LINKEDIN: www.linkedin.com/in/dillonmthomas
Website: Dillonmccray.com
EMAIL: Dillonmthomas@outlook.com
TELEPHONE: +1 (682) 261-0322

DILLON MCCRAY THOMAS
